

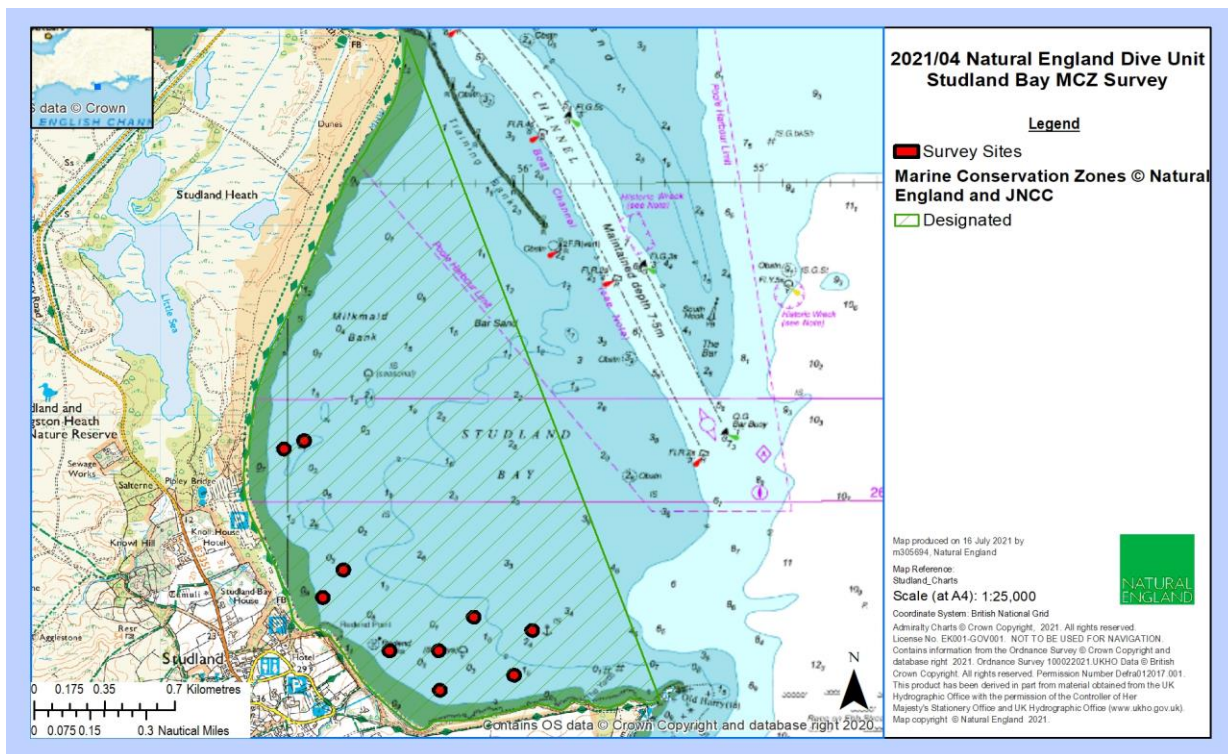
STUDLAND BAY DIVING OPERATIONS

Mariners are advised that Natural England will be carrying out a series of commercial dives for the purpose of seabed survey.

Operations will take place in Studland Bay. **Monday 19th to Friday 23rd July, daily from 0930 to 1600.** In the approximate positions shown on the chart below.

Divers will be operating from the vessel **MARY JO**. The dive flag **ALPHA(A)** will be displayed from this vessel and a listening watch maintained on **VHF CH16 and CH14**.

All vessels should proceed with caution, pass at a safe distance, with minimum wash and speed. Maintain a proper lookout and listening watch on CH16 and CH14.



This notice will self-cancel on Saturday 24th July 2021.

Mariners are reminded that Radar, AIS, CCTV, Telephone and VHF Channels are recorded 24/7

Owners, Agents, Charterers, Marinas, Yacht Clubs and Recreational Water sport Organisations should ensure that the contents of this Notice are made known to the masters or persons in charge of their vessels or craft.

CAPTAIN BRIAN MURPHY
HARBOUR MASTER

All Local Notices are available on the PHC website:

www.phc.co.uk/leisure/harbour-control/local-notice-to-mariners